

Draw a line to match the words to their meanings.

- melodic shape
 - An accompaniment made of different block chords or triads. Chord patterns can often be repeated.
- rhythmic accompaniment
 - A musical phrase can have a shape. It may rise or fall like a set of stairs or it could rise and then fall like the back of a diplodocus.
- chordal accompaniment
 - A rhythm backing, often played on untuned percussion. It could include repeated patterns.

Here are some rhythm patterns. Can you tick the rhythms that have syncopation in them?

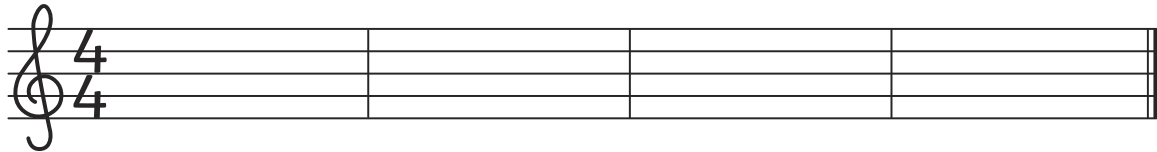
Four musical staves in 4/4 time, each with a corresponding empty box for a tick mark. The first staff has a regular 4-beat pattern. The second staff has syncopation with accents on the off-beats. The third staff has syncopation with accents on the off-beats. The fourth staff has a regular 4-beat pattern.

Explain how a composer could create contrast in a piece of music using:

dynamics	
texture	
timbre	
tempo	
pitch	
harmony	
duration	

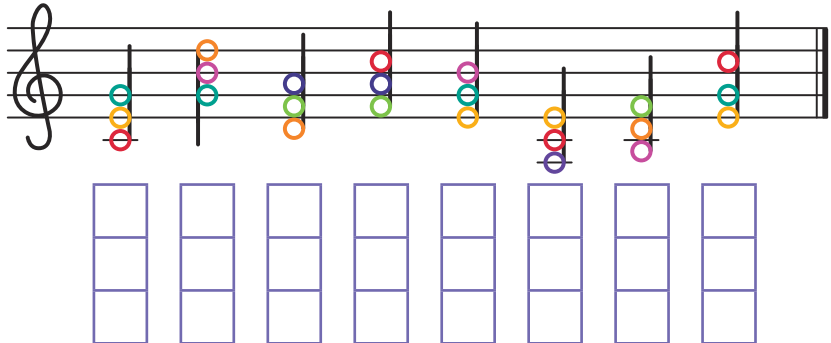
What is a four-bar phrase? _____

Write a four-bar phrase below.

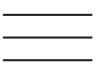




What is a block chord? _____

Which notes are in these chords?


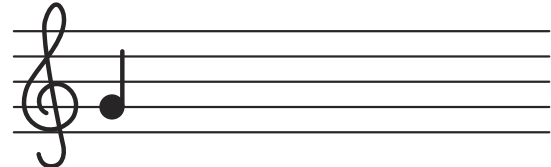


Fill in the missing sections of this table.


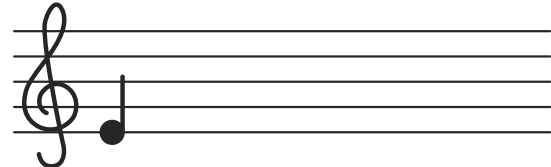
Note symbol	Name of notes	Rest symbol
○		
		
	crotchet	
		
	semiquaver	

Can you draw the notes of these scales on the staves?

G major scale

E minor scale

Draw a line to match the words to their meanings.

melodic shape	●	●	An accompaniment made of different block chords or triads. Chord patterns can often be repeated.
rhythmic accompaniment	●	●	A musical phrase can have a shape. It may rise or fall like a set of stairs or it could rise and then fall like the back of a diplodocus.
chordal accompaniment	●	●	A rhythm backing, often played on untuned percussion. It could include repeated patterns.

Here are some rhythm patterns. Can you tick the rhythms that have syncopation in them?

4 4	● ● ● ● ● ● ● ● ● ● ● ● ● ● ● ●	<input type="checkbox"/>
4 4	} ● } ● } ● ● } ● } ● } ● } ● } ● } ●	<input checked="" type="checkbox"/>
4 4	} ● ● } ● } ● ● } ● } ● } ●	<input checked="" type="checkbox"/>
4 4	○ ● ● ● ○ ● ● ● ○ ● ● ● ○ ● ● ●	<input type="checkbox"/>

Explain how a composer could create contrast in a piece of music using:

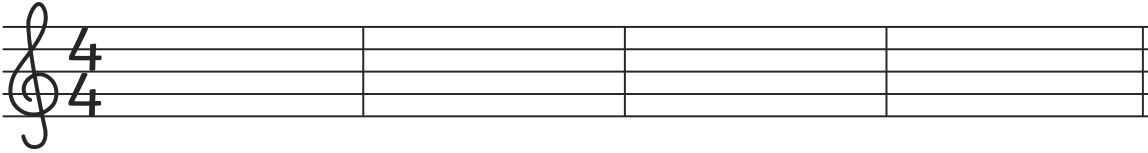
dynamics	Louder and quieter sections.
texture	Sections where there are fewer performers and sections where there are more performers.
timbre	A description of the sound of a musical note. Words like round, brassy, sharp or bright can be used to describe the timbre of a sound.
tempo	Faster and slower sections.
pitch	Higher and lower pitches.
harmony	Notes that sound nice together and notes that clash.
duration	Longer notes and shorter notes.

What is a four-bar phrase?

A four-bar phrase is often 8 or 16 beats long. It can form a section of a longer piece of music. Many composers use them. Four-bar phrases are often repeated in songs and longer pieces of music. Each phrase is like a sentence in the music. It makes sense on its own.

Write a four-bar phrase below.

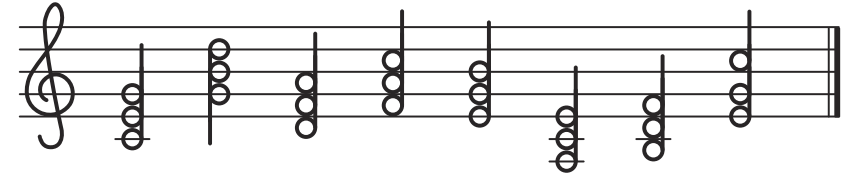
The children could use semibreves, minims, crotchets, quavers, semiquavers or their equivalent rests. Each bar must equal four beats.



What is a block chord?

An accompaniment can be made from a series of chords. These are known as block chords because they are played together as a block of notes.

Which notes are in these chords?



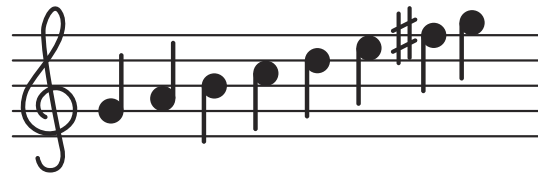
G	D	A	C	B	E	F	C
E	B	F	A	G	C	D	G
C	G	D	F	E	A	B	E

Fill in the missing sections of this table.

Note symbol	Name of notes	Rest symbol
	semibreve	
	minim	
	crotchet	
	quaver	
	semiquaver	

Can you draw the notes of these scales on the staves?

G major scale



E minor scale

